



Modular Raised Garden Bed

Watering Kit included



Dimensions: 1000mm x 1000mm x 300mm

Installation Instructions

HOLMAN

Modular Raised Garden Bed
With Watering Kit (not fitted)

Product Code: RGB1010

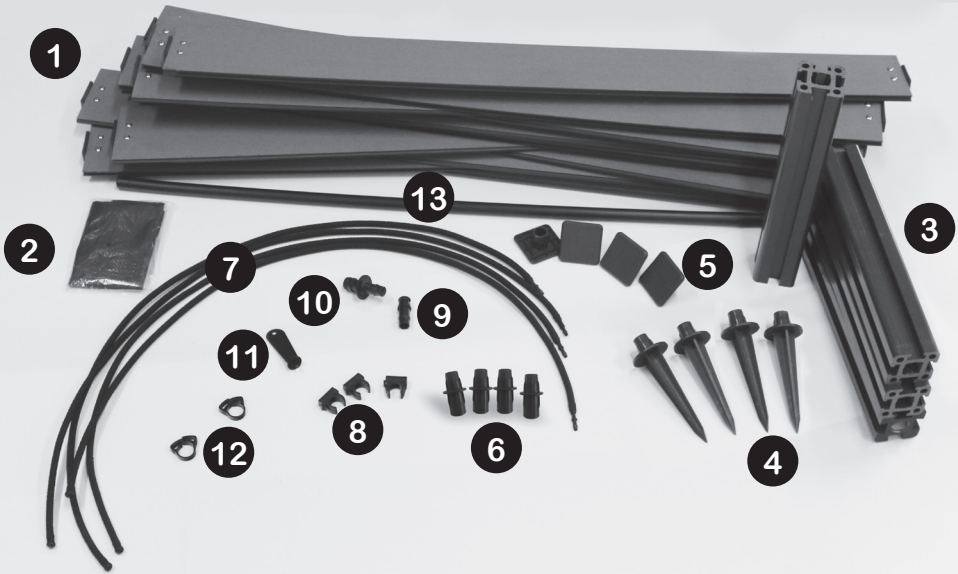


For more information
regarding this
product, please scan
the QR code with your
mobile device



Table of Contents / Glossary

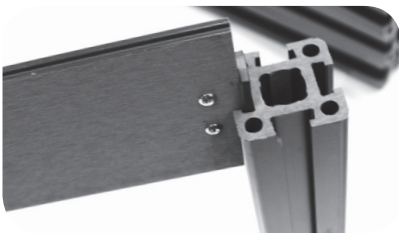
HOLMAN Raised Garden Bed GLOSSARY



Raised Garden Bed Contents List:

- | | |
|---------------------------------------|-------------------------------|
| 1) 12 x Raised Garden Bed Side Panels | 8) 3 x Clamps |
| 2) 1 x Weed Matt | 9) 1 x 13mm End Plug |
| 3) 4 x Pillars | 10) 1 x Click-On Adaptor |
| 4) 4 x Stakes | 11) 1 x 4mm Punch |
| 5) 4 x Caps | 12) 2 x 13mm Ratchet Clamps |
| 6) 4 x Joiners | 13) 1 x 13mm x 0.9m Poly Tube |
| 7) 4 x Weeping Hose | |

1) “Location” is as important in growing plants in a raised garden bed. Depending on the type of plants and the amount of sun light exposure required.



2) Slot the side panels in the pillars. Face up the tongue of the panels so they can connect with the bottom groove.

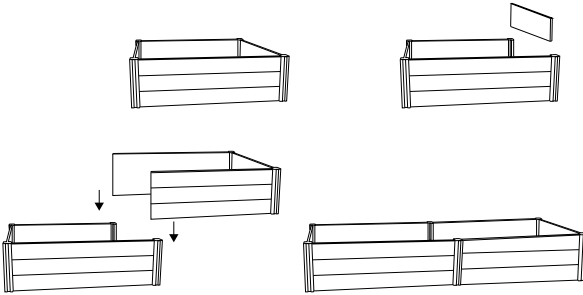
HOLMAN Raised Garden Bed Installation



3) Install the caps on top of the poles.

4) Lay down the weed mat on the bottom of the raised garden bed, so weeds can not get in.

5) Fill the panel with potting mix up to about 200mm. One kit can take up to 12 bags (25L)



Take advantage of the unlimited options of connecting multiple raised garden bed kits easily together and extend your garden. Simply slide another panel into the existing module.

Use the pole joiners to extend your raised garden bed vertically for plants with a bigger root system.



Hint: Heat up poly pipe with hot water. This makes connecting plugs & joiners easier.



a



b



c

a) Install the hose connector in one end of the poly pipe.

b) Push the end plug in the other end of the poly pipe.

c) Fit 13mm ratchet clamps on each fitting.



d) Lie down the 13mm poly pipe and put the 6mm weeping hose in the correct margin you would like.



e) Use the 4mm punch to punch a hole in the poly pipe. Insert the joiner connected to the tube.

Warranty

HOLMAN

Modular Raised Garden Bed Watering Kit included



Should you have any questions about this product or its operation please telephone our customer service helpline on 1300 716 188.

HOLMAN offer a 1 year replacement warranty from the original date of purchase.

HOLMAN offer no guarantee or compensation for subsequent damage or waste of water.

It is the responsibility of the user to check that the product is always operating satisfactorily.

To claim warranty the product **MUST** be returned with a copy of the original receipt.

We will honour all statutory guarantees that this product is of acceptable quality (including that it is fit for purpose). Product images may change without notice.



HOLMAN INDUSTRIES

47 Walters Drive,

Osborne Park,

Western Australia 6017.

Tel: +61 8 9204 1011 Fax: +61 8 9204 1013

Web: www.holmanindustries.com.au