

**HOLMAN**

# **BX2** Dual Outlet Bluetooth® Tap Timer



[www.holmanindustries.com.au](http://www.holmanindustries.com.au)

**User Guide**

# Contents

Overview	3
Package Contents and Components	3
BX2 Tap Timer Features	4
BX2 LED Status	4
Setup	5
Connecting to iGardener®	5
Renaming your BX2 in iGardener®	7
Basic Functions	8
Zone Management	8
Manual Operation	9
Sequential Watering	10
Scheduling	12
7 Days Watering	12
Interval Days Watering	13
Odd (calendar) Days Watering	14
Even (calendar) Days Watering	14
Cycle Watering	15
Saving Schedules	16
Support	17
Unpairing your BX2 from iGardener®	17
BX2 Connection Issues	17
Maintenance	18
Cold Weather	18
Batteries	18
Turning Off all Schedules	18
Connection Issues	18
Warranty	19

# Overview

## Package Contents and Components

- |                                                            |                                                                |
|------------------------------------------------------------|----------------------------------------------------------------|
| 1. <b>ZONE 1</b> outlet, 20mm BSP                          | 5. <b>MAIN DIAL</b>                                            |
| 2. <b>ZONE 2</b> outlet, 20mm BSP                          | 6. <b>TAP TIMER BUTTON</b>                                     |
| 3. 1× 20/25mm BSP reducing bush and 25mm BSP tap nut inlet | 7. Battery compartment: requires 4× AA alkaline batteries only |
| 4. 2× 12mm snap-on hose fittings                           | <b>⚠ Do not mix old and new batteries</b>                      |



Please read these instructions in full before proceeding with setup. iOS is a trademark of Apple Inc. Android is a trademark of Google LLC. The Android robot is reproduced or modified from work created and shared by Google and used according to terms described in the Creative Commons 3.0 Attribution License. All other content is Copyright © Holman Industries 2022

Model no: C03112

# Overview

## BX2 Tap Timer Features

1. **Automatic watering:** Easily done through the **iGardener®** app
  2. **Manual watering:** Select a **ZONE** to run on the **MAIN DIAL** and **START/STOP** by pressing the **TAP TIMER BUTTON**
- |                                                         |                                        |
|---------------------------------------------------------|----------------------------------------|
| ✔ IP54 dust and water protection rating                 | ✔ Housing: outdoor                     |
| ✔ Zones: 2                                              | ✔ Electrician required: no             |
| ✔ No. of starts per program: 3                          | ✔ 50-800 kPa working pressure          |
| ✔ Watering schedules: 7-day, interval, odd, even, cycle | ✔ 3°C-50°C ambient working temperature |
| ✔ Permanent memory: no                                  | ⚠ <b>For use with cold water only</b>  |
| ✔ Power source: 4× 1.5V AA alkaline batteries           | ✔ Maximum flow rate 25 L/min           |

## BX2 LED Status

- |     |                                                    |
|-----|----------------------------------------------------|
| ✔ ○ | <b>OFF:</b> Valve is closed                        |
| ✔ ○ | <b>BLUE QUICK FLASH:</b> Ready for pairing         |
| ✔ ○ | <b>BLUE SLOW FLASH:</b> Valve is open - watering   |
| ✔ ○ | <b>RED INTERMITTENT FLASH:</b> Low battery warning |
| ✔ ○ | <b>RED SOLID:</b> Batteries are flat               |

# Setup

## Connecting to iGardener®

1. Download **iGardener®** to your mobile device via the **App Store** or **Google Play**
  3. Ensure Bluetooth® is active on your smartphone
- ✔ Your **BX2** may not be visible as a device in your Bluetooth® list—this is normal
4. Open **iGardener®** on your mobile device and select **BX WATERING [b]** from the main menu

✔ Visit our website for more [www.holmanindustries.com.au/iGardener/](http://www.holmanindustries.com.au/iGardener/)

2. Install 4× 1.5V AA alkaline batteries into the battery compartment [a] of the **BX2 Tap Timer**, with the contacts pointing towards the front of the tap timer



- ✔ On **Android** devices, you may be prompted to allow location access—this is required for **iGardener®** to access **Bluetooth®** functions



Take full control of your garden watering and lighting with a **Bluetooth®** connection and a tap of your iPhone or Android, with the **iGardener™** smartphone app!

SCAN FOR MORE INFO

# Setup

## Connecting to iGardener® (continued)

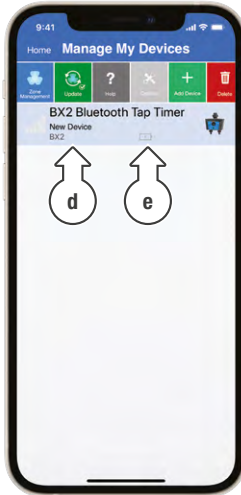
5. Tap **ADD DEVICE** [c] to add your **BX2** to **iGardener**®



- i** For security purposes, your **BX2** can only connect to one smartphone at a time

6. When your **BX2** is found it will appear in your **iGardener**® device list [d]

- i** Always ensure the latest version of **iGardener**® is running to ensure full functionality



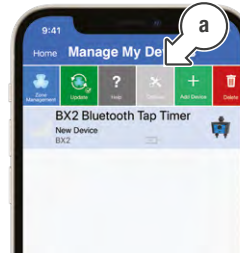
7. Battery status [e] is updated every minute when within 20m Bluetooth® range—after battery replacement, this can take up to a minute to refresh

# Setup

## Renaming your BX2 in iGardener®

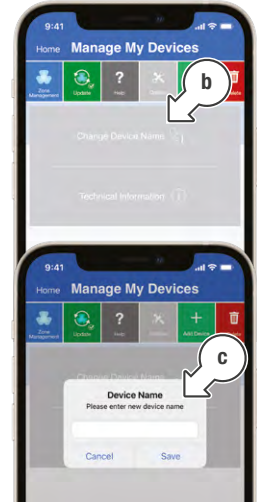
- i** If you have multiple **iGardener**® watering devices added it may be useful to rename your **BX2** to distinguish it from the others

1. Ensure your **BX2** is selected in the device menu and tap **OPTIONS** [a]



2. Tap **CHANGE DEVICE NAME** [b] from the pop up menu

3. Enter your new name and confirm as required [c]



**BX1**  
Bluetooth Tap Timer



Our single outlet **BX1 Bluetooth® Tap Timer** is the perfect companion to your garden. Water all around your home with **iGardener**®.



SCAN FOR MORE INFO

# Basic Functions

## Zone Management

- Support:** Access support by tapping
- Zone options:** Current watering zone selected shown in blue
- Scheduling options:** Currently selected shown in blue
- Day selection:** Use switches to toggle each day **ON** or **OFF**
- Time selection:** Schedule up to 3× **START TIMES** with individual **RUN TIMES**
- Starts synced:** Shown when **SEQUENTIAL WATERING** start times have been synced across all zones
- Manual operation**
  - This will not override schedules

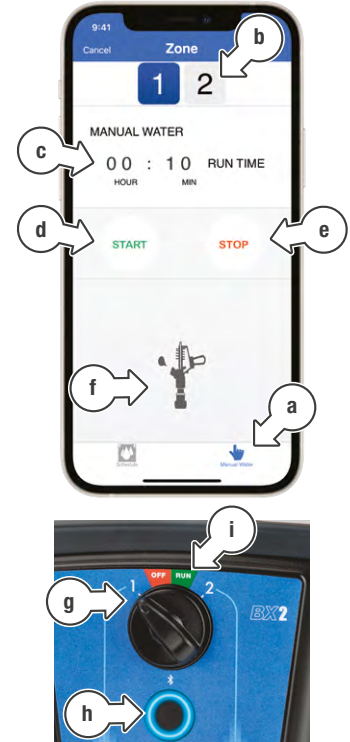


- If set to **CYCLE**, **RUN TIME** will be the cycle duration
- To disable watering, toggle the **START TIME** switch to **OFF**, and manually turn back **ON** as required

# Basic Functions

## Manual Operation

- On the **ZONE** page, tap **MANUAL WATER** [a]
- Select from **ZONES 1-2** [b] that you want to manually water
- Set the desired **RUN TIME** using the time selector [c]
- Tap **START** [d] to start watering for the set **RUN TIME**
- Tap **STOP** [e] to finish watering before the **RUN TIME** has lapsed
  - The sprinkler animation [f] will run while **MANUAL WATER** is running
  - To manually water without using **iGardener®**, turn the **MAIN DIAL** to the desired **ZONE** [g] and press the **TAP TIMER** button [h]
  - Schedules will run if the **MAIN DIAL** is set to **RUN** [i], **ZONE 1** or **ZONE 2**



# Basic Functions

## Sequential Watering

- i** **SEQUENTIAL WATERING** occurs when both **ZONES** are scheduled to run at the same time / have the same **DAY SELECTION**
- i** Rather than running all of your **ZONES** at once, the **BX2** will automatically run each **ZONE** one-by-one per your desired **RUN TIMES**
- i** Running multiple **ZONES** at once is not possible as this will result in pressure loss across your irrigation system

1. Follow the instructions as per the [Scheduling](#) section of this manual to set your watering routine

**i** **START TIMES** do not need to be edited for **ZONE 2** in **SEQUENTIAL WATERING**, this will be automatically updated after set up

2. Once **RUN TIMES** are set for both **ZONES**, tap **ZONE 1** on the **ZONES** page [a]

3. Next to **START 1**, tap the **STARTS NOT SYNCED** icon [b]



# Basic Functions

## Sequential Watering (continued)

- i** This will update to show **STARTS SYNCED** when the **START TIMES** have been synced
  - i** This will sync **START TIMES** across both **ZONES** for **START 1** only
4. Check **ZONE 2** to see **START TIMES** are automatically set [c]
5. Repeat steps 1-3 to set up **SEQUENTIAL WATERING** for **STARTS 2-3** as desired
- i** **SEQUENTIAL WATERING** does not apply to **CYCLE WATERING**





**BX1**  
Bluetooth Tap Timer

Our single outlet **BX1 Bluetooth® Tap Timer** is the perfect companion to your garden. Water all around your home with **iGardener®**.

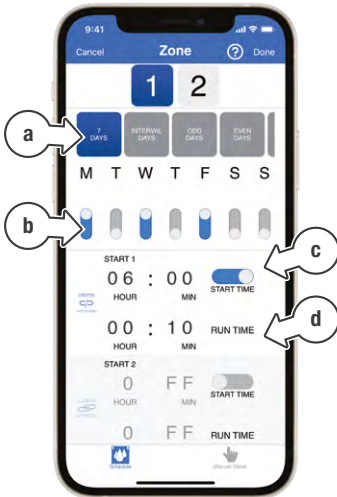


SCAN FOR MORE INFO

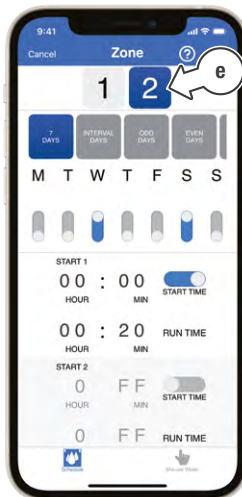
# Scheduling

## 7 Days Watering

1. On the **ZONE** page, **7 DAYS** [a] watering will be automatically selected
2. Use day switches to toggle each day **ON** or **OFF** as required [b]
3. Set up to **3 START TIMES** [c] for your **BX2** as required



4. Set a **RUN TIME** [d] for each of the **START TIMES** shown
- i** This example, will water **ZONE 1** on Monday, Wednesday and Friday for 10 minutes at 6am
5. Toggle to **ZONE 2** [e] and repeat steps 2-4

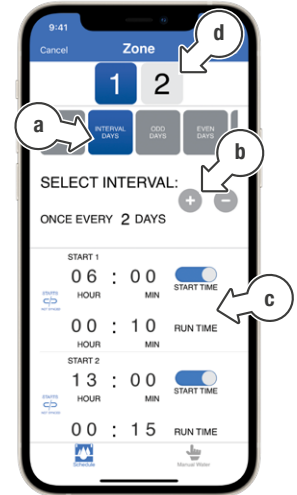


# Scheduling

## Interval Days Watering

1. On the **ZONE** page, tap **INTERVAL DAYS** [a]
2. Set the day interval tapping the **+** or **-** [b]
3. Set **START** and **RUN TIMES** [c] in the same way as **7 DAY WATERING**
4. Toggle to **ZONE 2** [d] and repeat steps 1-3

- i** This example shown will water **ZONE 1** every 2 days for 10 minutes at 6am and 15 minutes at 1pm





**Bluetooth® Garden Light Controllers**

Light up your garden with our RGB or Warm White Bluetooth® Garden Light Controllers. Complete control all through *iGardener*®.



SCAN FOR MORE INFO



# Scheduling

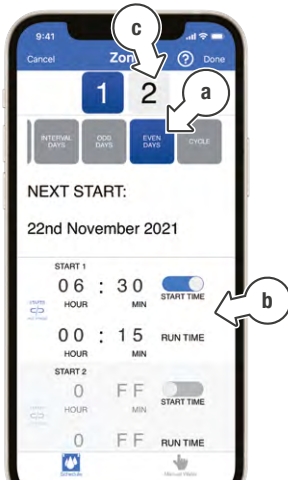
## Odd (calendar) Days Watering

1. On the **ZONE** page, tap **ODD DAYS** [a]
  2. To skip watering on the 31st, toggle **EXCL 31** [b] to **ON**
  3. Set **START** and **RUN TIMES** [c] in the same way as **7 DAY WATERING**
  4. Toggle to **ZONE 2** [d] and repeat steps 1-3
- i** This example will water **ZONE 1** at 7am for 10 minutes and 4pm for 15 minutes, on every odd day beginning 23 November 2021, excluding the 31st of any month



## Even (calendar) Days Watering

1. On the **ZONE** page, tap **EVEN DAYS** [a]
  2. Set **START** and **RUN TIMES** [b] in the same way as **7 DAY WATERING**
  3. Toggle through to **ZONE 2** [c] and repeat steps 1-3
- i** This example shown will water **ZONE 1** at 6:30am for 15 minutes on every even day beginning 22 November 2021



# Scheduling

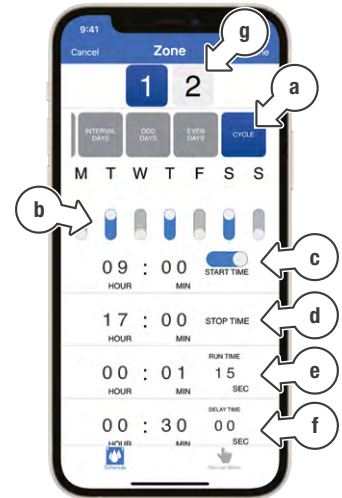
## Cycle Watering

This feature allows you to run short burst intervals starting at 5 seconds, suitable to use with a misting system or greenhouse.

1. On the **ZONE** page, tap **CYCLE** [a]
- i** You may need to swipe the scheduling options across to access the **CYCLE** button
2. Use the day switches to toggle each day **ON** or **OFF** as required [b]
3. Set a **START TIME** [c]
4. Set a **STOP TIME** [d]
5. Set a **RUN TIME** [e]
6. Set a **DELAY TIME** [f]
7. Toggle to **ZONE 2** [g] and repeat steps 1-6

- i** Using this feature can drain battery life when **RUN** and **DELAY TIMES** are set at a high frequency
- i** **RUN** and **DELAY TIMES** must be set to at least 5 seconds

**i** This example shown will water **ZONE 1** on Tuesday, Thursday and Saturday, starting the cycle at 9am and finishing at 5pm. During this time, watering will run for 1 minute 15 seconds at a time with a 30 minute delay in between





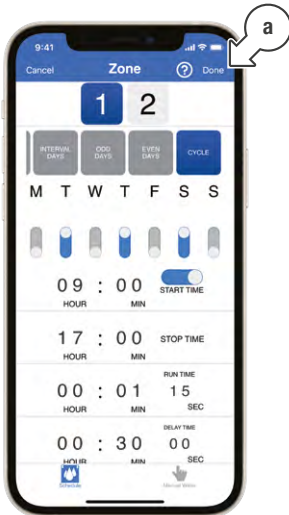
# Scheduling

## Saving Schedules

**i** After entering any schedule details, tap **DONE** [a]

1. To send the new schedule to your **BX2**, tap **UPDATE** [b] above the device list

2. A **DONE** symbol [c] will appear when the new schedule has been synced with your **BX2**



# Support

## Unpairing your BX2 from iGardener®

**i** This may be necessary if you wish to move your **BX2** to a different smartphone

### To unpair your BX2 via your smartphone:

**i** Ensure your **BX2** is selected in the device menu and tap **DELETE** [a]

**i** If a schedule is set on your **BX2** when it is unpaired, the schedule will continue to run until it is paired with a new smartphone and a new schedule is saved



### To unpair your BX2 manually:

**i** Your **BX2** can be unpaired by removing the batteries

## BX2 Connection Issues

1. Ensure your **BX2** is fitted with alkaline batteries correctly as per the instructions
2. Ensure your smartphone is within 20m Bluetooth® range
3. Ensure no other smartphone is currently paired with your **BX2**—this can be resolved by following the unpairing process

4. Your **BX2** is designed to be operated from **iGardener®**—without the app, it cannot be programmed
5. For additional help press **?** where possible, or visit [www.holmanindustries.com.au/BX2](http://www.holmanindustries.com.au/BX2) for more information

# Maintenance

## Cold Weather

---

**i** Your **BX2** should be removed from the tap and stored away during winter

**⚠** **Keep your tap timer out of freezing conditions as this can damage internal components**

## Batteries

---

**i** Remove batteries from your **BX2** during periods of non-use

**⚠** **Battery leakage can cause corrosion and damage to your BX2**

## Turning Off all Schedules

---

**i** Turn the **MAIN DIAL** to **OFF** to disable all watering schedules

## Connection Issues

---

**i** If your **BX2** shows as disconnected after replacing the batteries, please wait a few minutes for **iGardener®** to update your device status

**i** For additional support with connection issues, please contact our **Customer Service** team

### Need help? Just ask!

The Holman website has a host of additional information on features. Head to [support.holmanindustries.com.au](https://support.holmanindustries.com.au) for more tips, tricks and support content.

If you still need help, feel free to email our friendly Customer Service team at [support@holmanindustries.com.au](mailto:support@holmanindustries.com.au) or call at [08 9416 9999](tel:0894169999).



SCAN FOR MORE INFO

# Warranty

## 2 Year Replacement Guarantee

---

Holman Industries offers a 2 year replacement guarantee with this product.

In Australia our goods come with guarantees that cannot be excluded under the Australian Consumer Law. You are entitled to a replacement or refund for a major failure and compensation for any other reasonably foreseeable loss or damage. You are also entitled to have the goods repaired or replaced if the goods fail to be of acceptable quality and the failure does not amount to a major failure.

As well as your statutory rights referred to above and any other rights and remedies you have under any other laws relating to your Holman product, we also provide you with a Holman guarantee.

Holman Industries guarantees this product against defects caused by faulty workmanship and materials for 2 years domestic use from the date of purchase. During this guarantee period Holman Industries will replace any defective product. Packaging and instructions may not be replaced unless faulty.

In the event of a product being replaced during the guarantee period, the guarantee on the replacement product will expire 2 years from the purchase date of the original product, not 2 years from the date of replacement.

To the extent permitted by law, this Holman Replacement Guarantee excludes liability for consequential loss or any other loss or damage caused to property of persons arising from any cause whatsoever. It also excludes defects caused by the product not being used in accordance with instructions, accidental damage, misuse, or being tampered with by unauthorised persons, excludes normal wear and tear and does not cover the cost of claiming under the warranty or transporting the goods to and from the place of purchase.

Should you suspect your product may be defective and need some clarification or advice please contact us directly:

**1300 716 188**  
[support@holmanindustries.com.au](mailto:support@holmanindustries.com.au)  
**11 Walters Drive,**  
**Osborne Park 6017 WA**

If you are certain your product is defective and is covered by the terms of this warranty, you will need to present your defective product and your purchase receipt as proof of purchase to the place you purchased it from, where the retailer will replace the product for you on our behalf.



**Thanks for being a  
#SMARTGARDENER**



**We really appreciate having you as a customer, and  
would like to say thank you for choosing us.**

We recommend registering your new product on our website. This will ensure we have a copy of your purchase and activate an extended warranty. Keep up to date to with relevant product information and special offers available through our newsletter.

[www.holmanindustries.com.au/product-registration/](http://www.holmanindustries.com.au/product-registration/)



# HOLMAN

For the #SMARTGARDENER   

Copyright © 2021 Holman Industries