

**HOLMAN**

# Auto Rewind Hose Reel

10M / 20M / 30M Models



## Instruction Manual

10M / 20M / 30M Auto Rewind Hose Reel  
Installation, Hose Replacement  
and Troubleshooting Guide



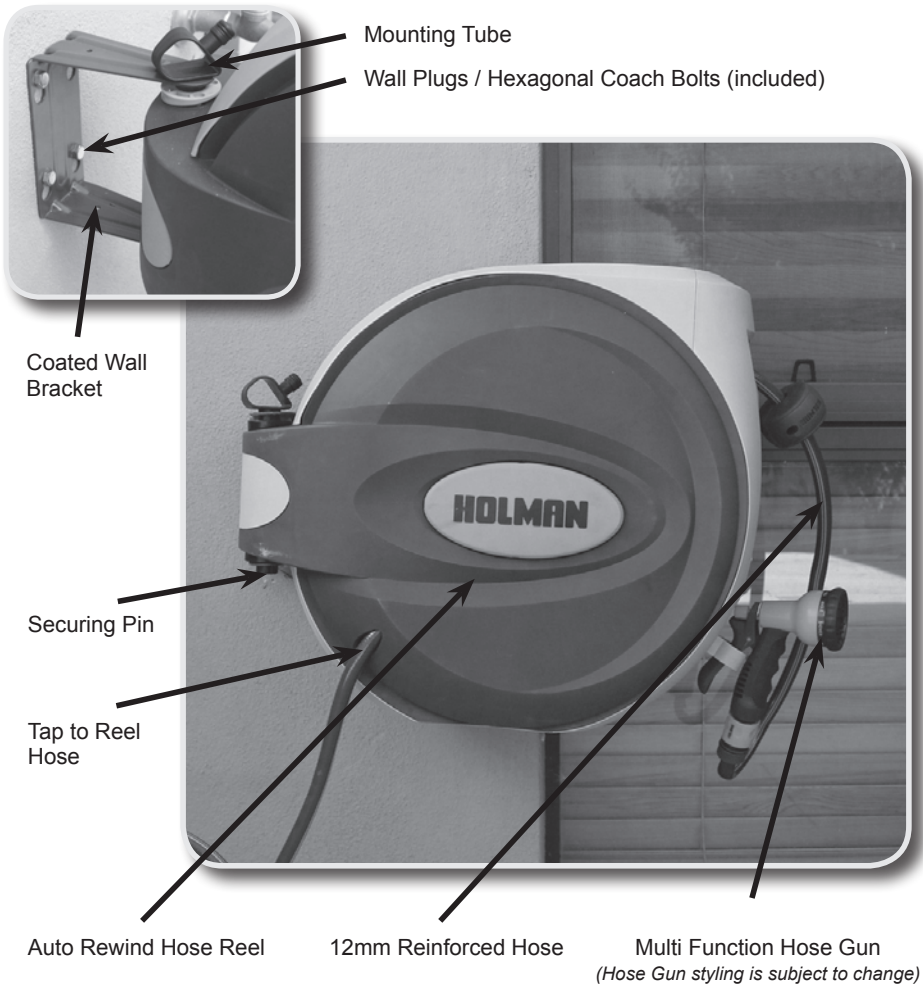
# Product Codes: 1110H / 1120H / 1130H Models

## Introduction

Thank you for purchasing this HOLMAN Auto Rewind Hose Reel. This product uses a 12mm reinforced hose for added strength and durability, and includes a multi function hose gun. *(Hose Gun styling is subject to change)*

For your information, please read these installation instructions before using the Auto Rewind Hose Reel. Please keep all instructions and refer to them when necessary.

## Glossary



# Auto Rewind Hose Reel - Instruction Manual

## Hose Reel Operating Features



1

1 Mount hose gun into the clip on the front of the hose reel for easy and convenient storage. *(Nozzle holder not available on 10 Metre model)*



2

2 Select the required flow pattern and depress the back lever of the multi function hose gun to start watering. Please ensure you turn your tap off after use. *(Hose Gun styling is subject to change)*



3

3 Supplied with each hose reel is a strong coated wall bracket and hose end plug for convenient storage when not in use.



4

4 Lift the hose reel top cover for easy access to either clean or replace your hose. *(20m & 30m replaceable only)*

# Auto Rewind Hose Reel - Instruction Manual

## Auto Rewind Hose Reel Installation

1



1

The Auto Rewind Hose Reel should be installed nearest to your chosen water source for convenience of use. Check the tap to reel hose can reach the tap prior to mounting the hose reel.

2

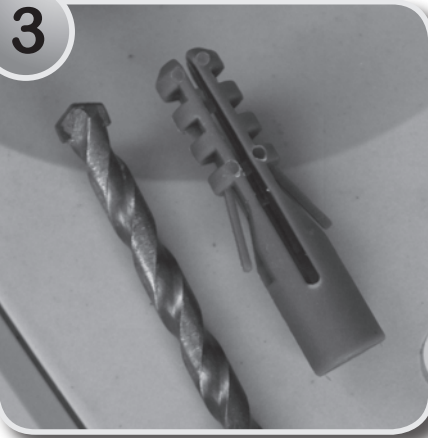


2

Take the coated mounting bracket and place against either a wall or wooden post.

Mark the position of where you would like the screws to be placed through the centre of the bracket holes to prepare for drilling.

3



3

Take the wall plugs (supplied with the hose reel) and measure the correct drill bit width to use.

It is recommended that you drill slightly undersize as all materials have different properties and this will ensure the wall plugs have a secure fit. Please note that if you are attaching your hose reel to a wooden post, you will not require the wall plugs as the coach bolts screw directly into wood.

As a guide only, the wall plugs for the 10m hose reel are 7.7mm in diameter, suitable to hammer into a 7.5mm drilled hole, and the 20m/30m wall plugs are 11.7mm, suitable to hammer into an 11.5mm hole.

It is very important to use the correct size drill bit, so a very secure fit of the wall bracket is made before installing the Auto Rewind Hose Reel.

When ready drill all four holes, then hammer the wall plugs gently into your wall. (if attaching to a wall).

# Auto Rewind Hose Reel - Instruction Manual

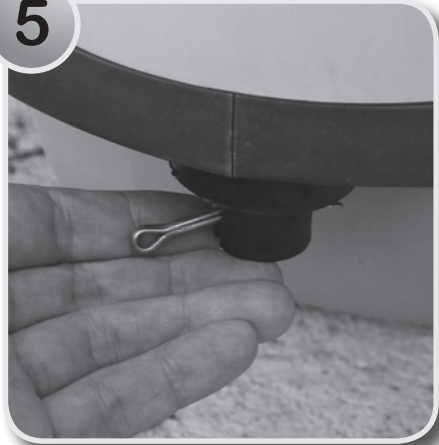
4



4

Place the bracket in position over the four wall plugs and screw each hexagonal coach bolt into your wall or wooden post. Screw in each bolt until all four have a secure hold on the coated bracket against the surface, making sure you slot the bracket down over the bolts before tightening.

5



5

Take your Auto Rewind Hose Reel, and remove the securing pin at the base of the mounting tube. Remove the mounting tube from the hose reel and slot the hose reel inside the wall bracket, so the fitting tube hole lines up with the wall bracket hole. Then replace the mounting tube into its hole to hold the hose reel in place and replace the securing pin into the base of the mounting tube.

6



6

Connect the tap to reel hose, to the garden tap.

7



7

You are now ready to use your Auto Rewind Hose Reel.

# Hose Replacement - 1120H / 1130H Models

## Hose Replacement Guide



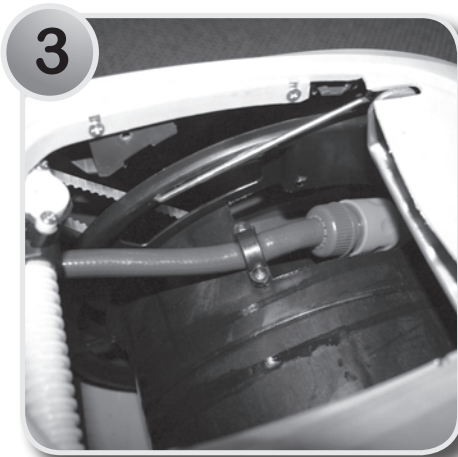
1

1 Lift the viewing panel to see the locking bars in a secure position, having pulled the hose out to its limit (retraction wheel must lock so the hose doesn't auto retract).



2

2 Before placing the locking bars in the auto wheel, remove the viewing panel for ease of access.



3

3 Once the viewing panel is removed, place the locking bars in the nearest secure holes on the auto wheel.



4

4 Ensure that both locking bars (on each side) are placed securely in the holes on the auto wheel before proceeding.

# Hose Replacement - 1120H / 1130H Models

## Hose Replacement Guide

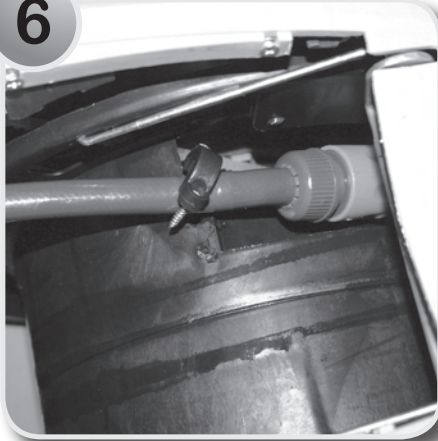
5



5

Unscrew the clamp holding the hose in place on the auto retraction wheel.

6



6

Ensure you fully unscrew both sides of the clamp before proceeding.

7



7

Keep the clamp and screws together away from the inside mechanism

8



8

Detach the hose connector from the 'quick release' snap on connection.

# Hose Replacement - 1120H / 1130H Models

## Hose Replacement Guide

9



9

Unscrew the hose connector from the hose, ensuring you keep all the parts together.

10



10

Pull the old hose back through the auto retraction guide hole, ready to fit the new hose.

11



11

This image shows a plan view of the auto retraction hose reel once the old hose has been removed.

12



12

Feed the new hose through the guide hole ready to attach the hose connector.



# Hose Replacement - 1120H / 1130H Models

## Hose Replacement Guide

13



14



13

Repeat the hose removal process in reverse. Attach the hose connector, plug the hose connector on to the white plastic adaptor and screw the hose clamp back into position. Then take the locking bars out of the retraction wheel and secure them inside the hose wheel unit. Lastly replace the viewing panel.

14

Gently pull the newly installed hose to release the auto retraction hose reel for it to start winding the hose back in to the unit. The image above shows how the hose reel should look once fully retracted, ready for storage.

15

**General Note:** Once you have replaced your hose, unscrew the brown plastic 'hose stop' from the old hose and screw onto the new hose at the desired distance away from the hose end, allowing the hose to stop at the correct point when retracting.

# Troubleshooting - Hose Reel Not Retracting

## Locking Bars Preventing Retraction



1

Locking bars in the **CORRECT** position, clipped to the outer casing.



2

Locking bars in the **WRONG** position laying on the hose. They will cause the hose to jam as it extends or retracts.



3

Locking bars in the **CORRECT** position, clipped to the outer casing.



4

Locking bars in the **WRONG** position. The bars will catch on the reel & prevent it from working correctly.

# Troubleshooting - Hose Reel Not Extending

## Fully Retracted Hose Not Extending



1

1 If the hose isn't extending properly, this may be caused by the screws securing the guide hole being too tight.



2

2 Slowly pull the hose to move the guide hole away from the inside edge of the hose unit for easier access.



3

3 Taking a cross head screw driver, unscrew the 2 screws holding the guide hole in place slightly, so the hose moves freely as you extend it.

# Troubleshooting - Hose Reel Not Retracting

## Fully Extended Hose Not Retracting



**1** If the hose retraction wheel is stuck and the hose is fully extended, the wheel still has movement past this point. Grip the hose close to the guide hole and gently pull.

**2** The retraction wheel will give you enough movement to unlock itself before you slowly allow the auto retraction wheel to wind the hose back into the unit.

## Auto Rewind Hose Reel - Warranty

Should you have any questions about this product or its operation please telephone our customer service helpline on **1300 716 188**.

Holman offer a **1 year** replacement warranty from the original date of purchase.

To claim warranty the product must be returned with a copy of the original receipt.

We will honour all statutory guarantees that this product is of acceptable quality (including that it is fit for purpose).



### HOLMAN INDUSTRIES

47 Walters Drive,  
Herdsmen,

Western Australia 6017.

Tel: **61 8 9204 1011** Fax: **61 8 9204 1013**

Web: [www.holmanindustries.com.au](http://www.holmanindustries.com.au)